

Late Blight Control 2024



INFINITO®

Mix and alternate a range of effective modes of action to protect against different Late Blight strains

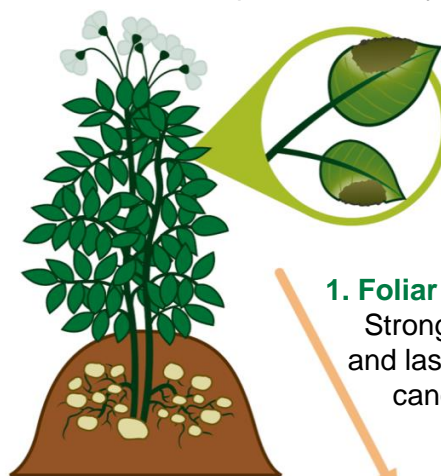
36_A2	<ul style="list-style-type: none"> • These strains dominated sampled blight populations in GB in 2023 • They are characterised by sporulation at lower temperatures, short latent periods and higher sporulation rates
6_A1	
13_A2	<ul style="list-style-type: none"> • Isolates insensitive to Metalaxyl-M
37_A2	<ul style="list-style-type: none"> • Isolates insensitive to Fluazinam
43_A1	<ul style="list-style-type: none"> • Isolates insensitive to CAA and OSPBI fungicides detected in Europe, but not in GB populations sampled in 2023

- Follow FRAG and manufacturer guidance on application of fungicides for Late Blight control. Incorporate the multi-site Mancozeb in programmes where necessary
- Infinito's combination of Propamocarb + Fluopicolide is effective on all major Late Blight strains in GB, as well as 43_A1

Position fungicides according to risk

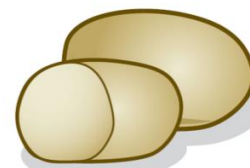
- Sprays must be applied as protectant (before infection) and repeated at minimum intervals of 7 days until complete haulm destruction. Shorter spray intervals may be beneficial when risk of infection is very high
- Utilise risk forecasting tools such as [BlightSpy](#) to support fungicide timing decisions
- Infinito can be positioned through the season, as Propamocarb's systemic and Fluopicolide's translaminar mobility protect the crop in periods of rapid and stable canopy growth
- Infinito's zoospore activity is valuable when risk of tuber infection is high; if seed infection is suspected and towards haulm destruction

Infinito blocks every stage of Late Blight lifecycle, with its protectant, curative and anti-sporulant activity



1. Foliar blight control
Strong early curative and lasting preventive canopy protection.

Infinito dramatically reduces spore numbers, viability, mobility and sporangia dispersion.



2. Tuber blight control
Any spores washed off leaves are no longer viable and cannot infect tubers.



Maximum individual dose: 1.6 L/ha

Maximum total dose: 6.4 L/ha per crop

Latest time of application: 7 days before harvest

For more information please contact your local CTM or visit our [Late Blight Knowledge Hub](#)

