



# Climate FieldView™ Post Harvest Yield Adjustment

## 1 POST HARVEST YIELD ADJUSTMENT BY FIELD

1 Open FieldView Cab



2 Go to the Map

3 Look for the correct field where  
a yield adjustment is needed

4 Open the Yield Map

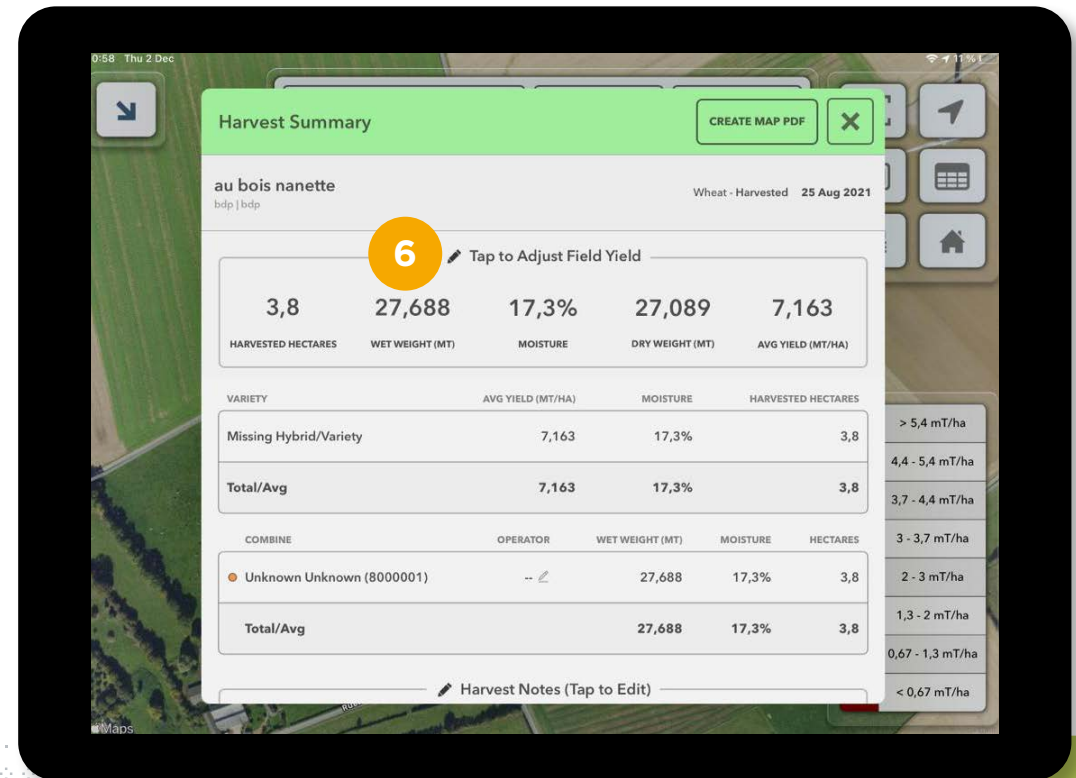


5 On the top right corner of your  
screen, look for the following  
more options icon and open  
the harvest summary page



6

Within the harvest summary report, tap the “Tap to Adjust Combine Yield” icon



6. Tap to adjust Field Yield

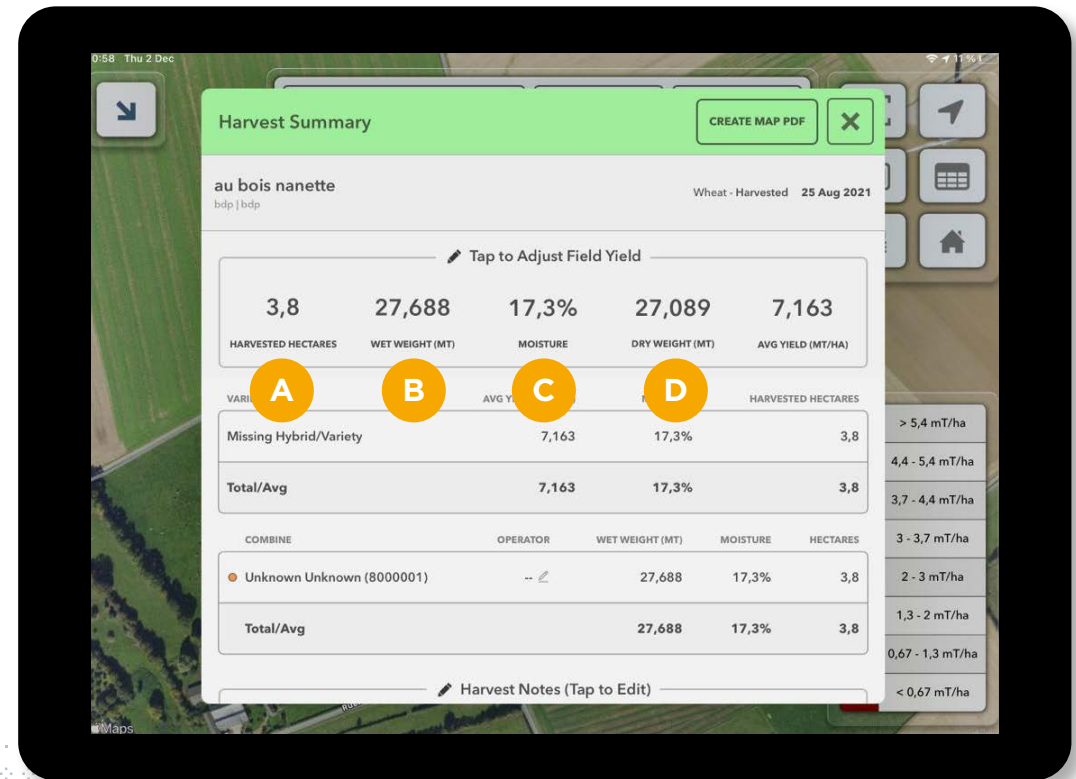


## Here you can adjust:

- A** Harvested hectares
- B** Wet weight
- C** Moisture
- D** Dry Weight

Based on the provided data, the app automatically adjusts your Yield Map and your Average Yield

All changes made to the yield map will automatically sync up with your other devices





## 2. Tap to adjust Combine Yield

2

## POST HARVEST YIELD ADJUSTMENT BY COMBINE

ADJUST YIELD WHERE MORE THAN ONE COMBINE HARVESTED

1

Open the harvest summary again

2

Scroll down and tap “Tap to adjust combine yield”

3

Here you will be able to make changes to the harvested tonnes that a combine has measured with the - and + icons

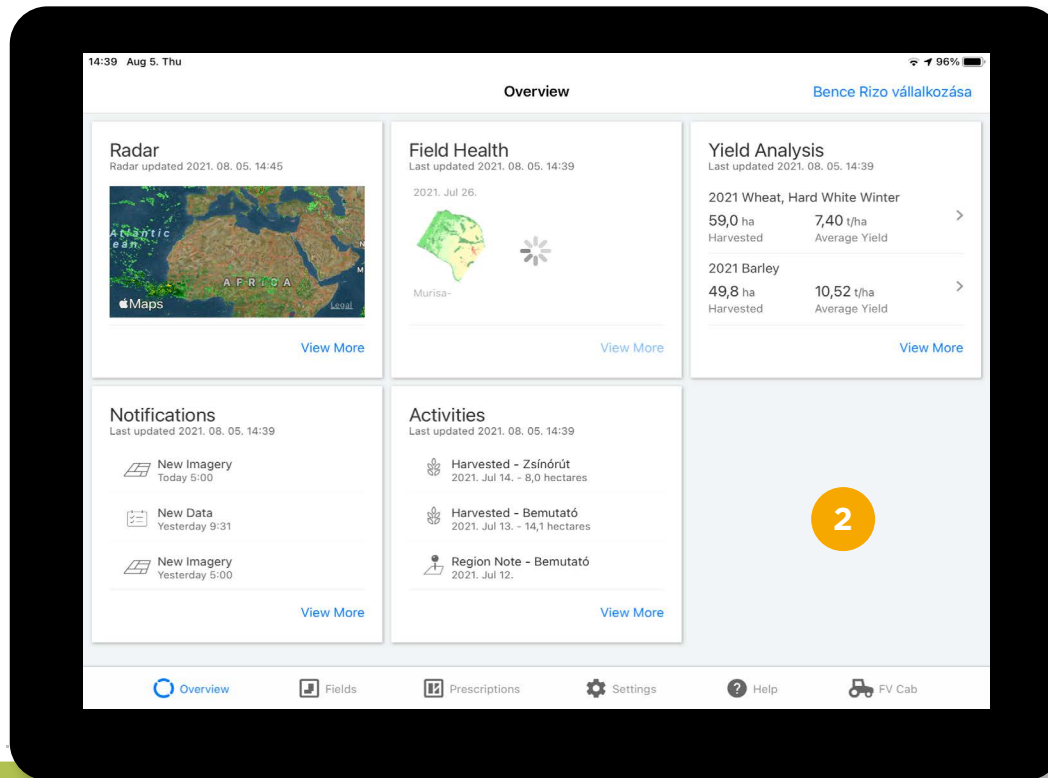
4

You can also choose auto-adjust where the button automatically distributes yield to the area harvested by each combine

5

Afterwards you can either choose cancel, which defaults back to the original yield or done which saves the changes made





## 2. Yield Analysis

3

## ADJUSTING THE YIELD IN FIELDVIEW APP

1

Open the FieldView App

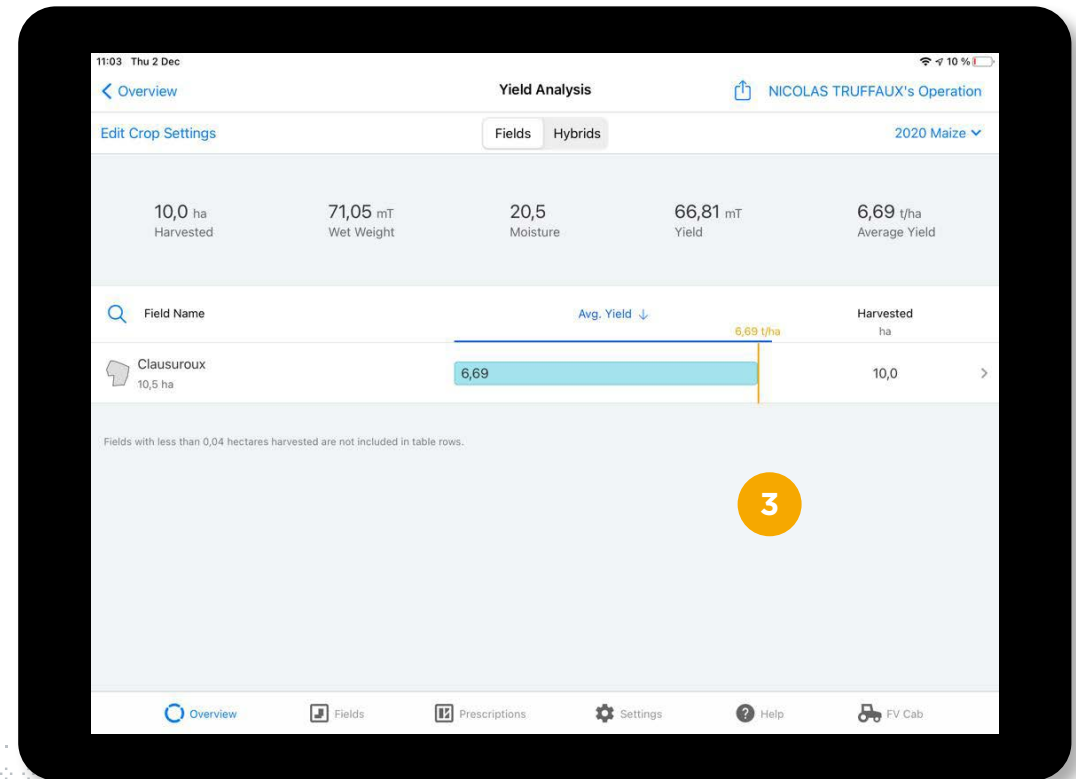


2

On the top right of your screen, open yield analysis

3

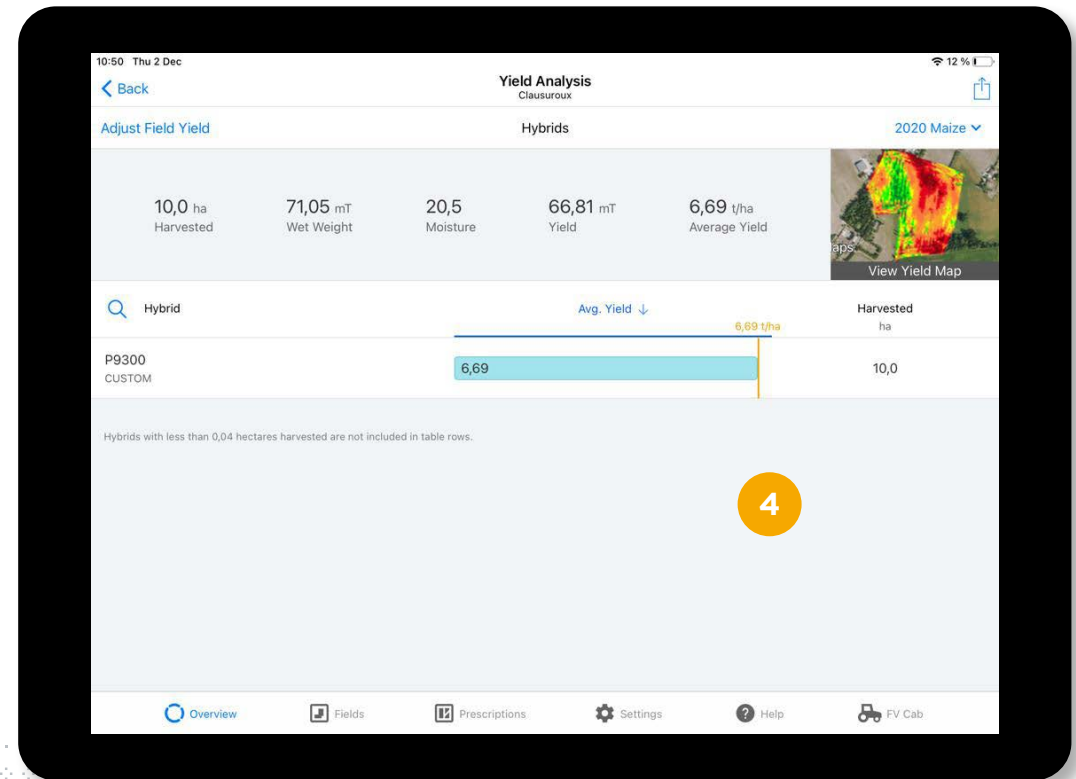
Search for the field where the adjustment is needed and click on its name





4

At the top left of your screen, select  
adjust Field Yield





## Here you will be able to adjust:

- Harvested area
- Wet weight
- Moisture

After the adjustments are complete you can tap on cancel to discard changes or apply to save changes

