

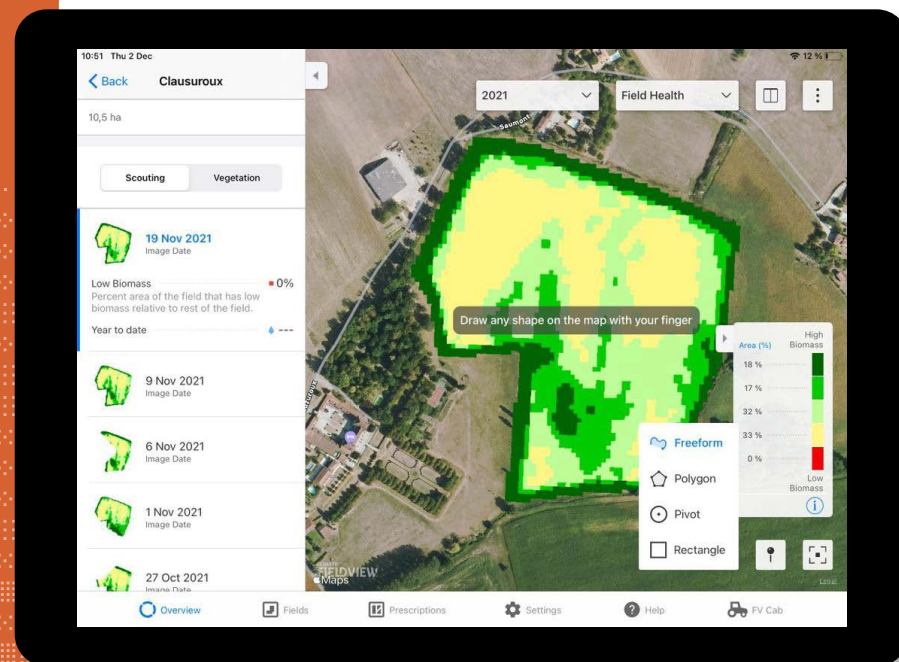


Post Harvest Analysis with Climate FieldView™

1 FIELD REGION REPORT

1 Tap Fields button (bottom)

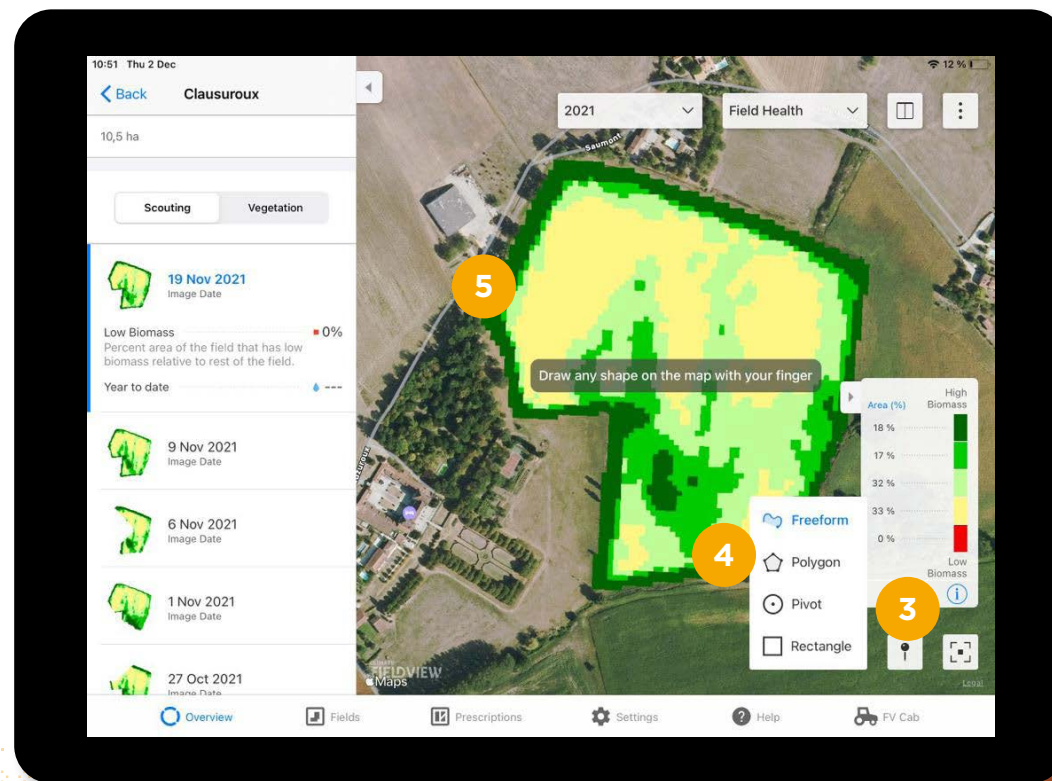
2 Select field of interest from list



3 Tap the Field Region Report button

4 Select Freeform, Polygon, Pivot, or Rectangle

5 Draw region with finger



4. Freeform - Polygon - Rectangle

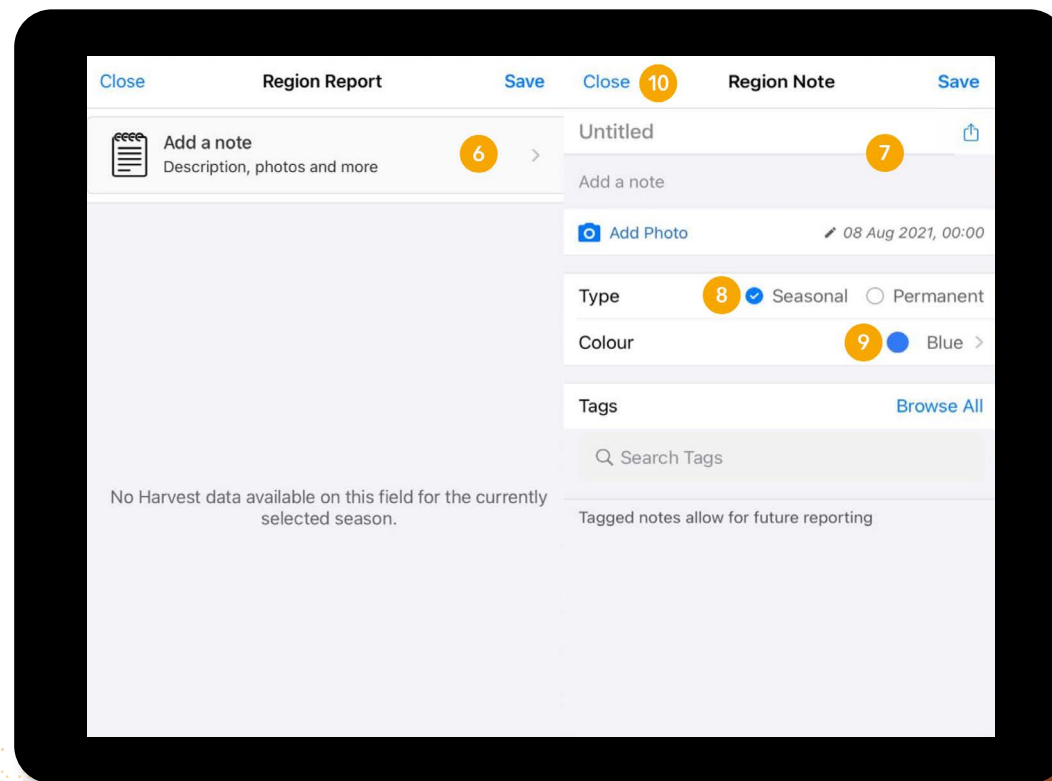
6 Tap Add a note

7 Add title, photo and notes

8 Identify region as seasonal or permanent

9 Select a color for the region outline and add tags

10 Tap Report to go back, then Save



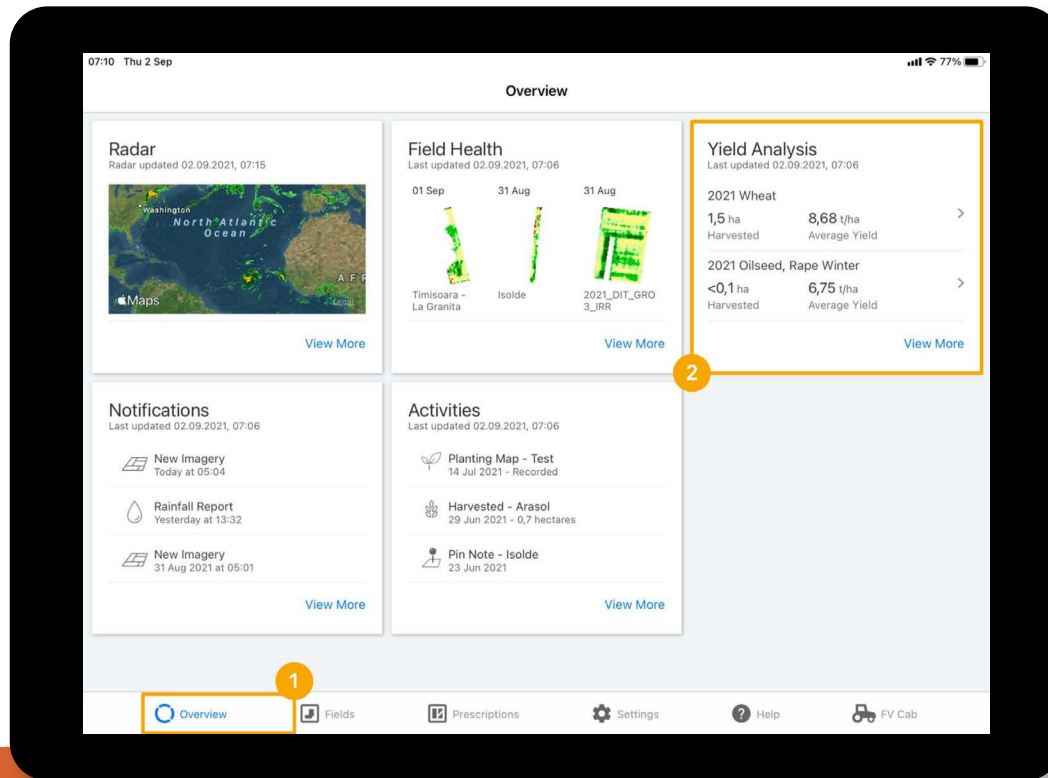
6. Add a note (Description, photos and more)

7. Untitled

8. Type (seasonal-permanent)

9. Colour

10. Close - Save



1. Overview

2

YIELD ANALYSIS

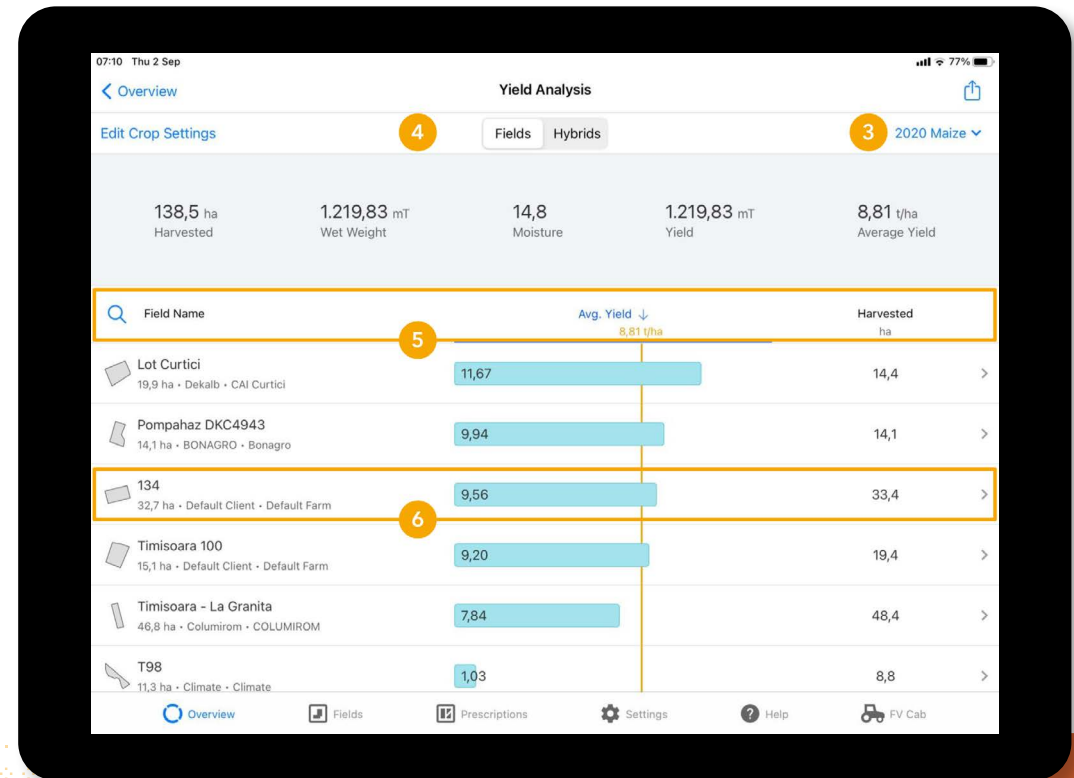
1

Select Overview (bottom)

2

Tap on the Yield Analysis card

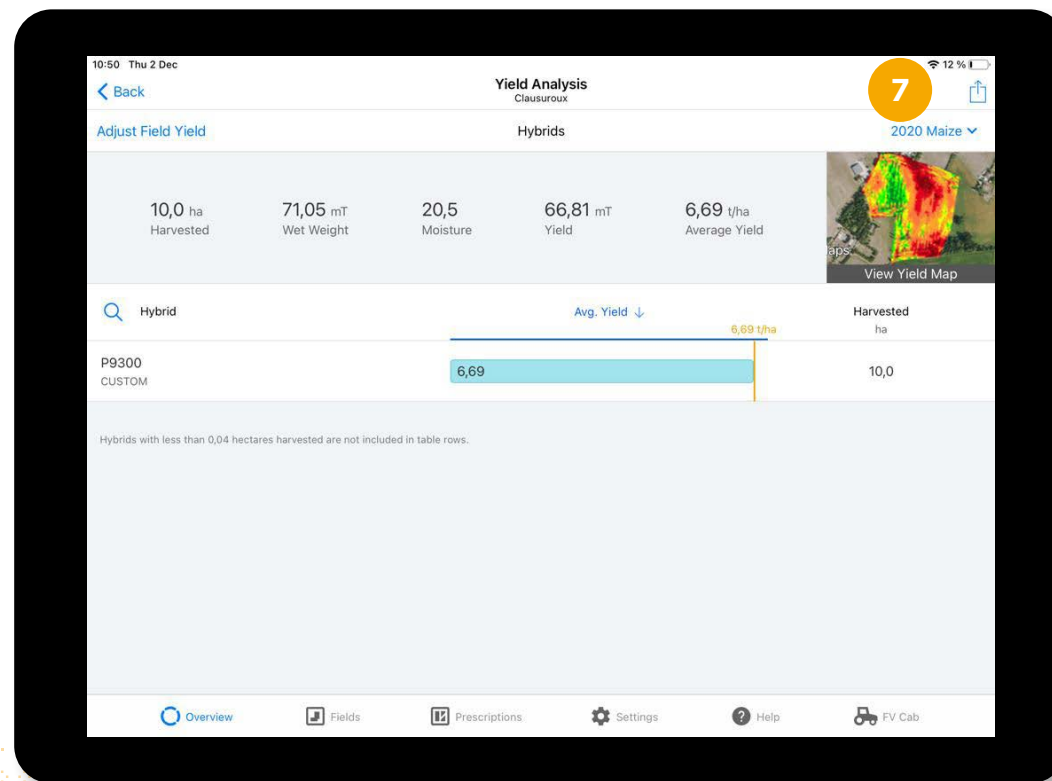
- 3 Confirm the correct operation, crop and year
- 4 Select the Field, Hybrid/Variety or Soils tab
- 5 Sort data by Field Name, Avg. Yield, or Harvested Hectares
- 6 Tap any row to dig into more detail

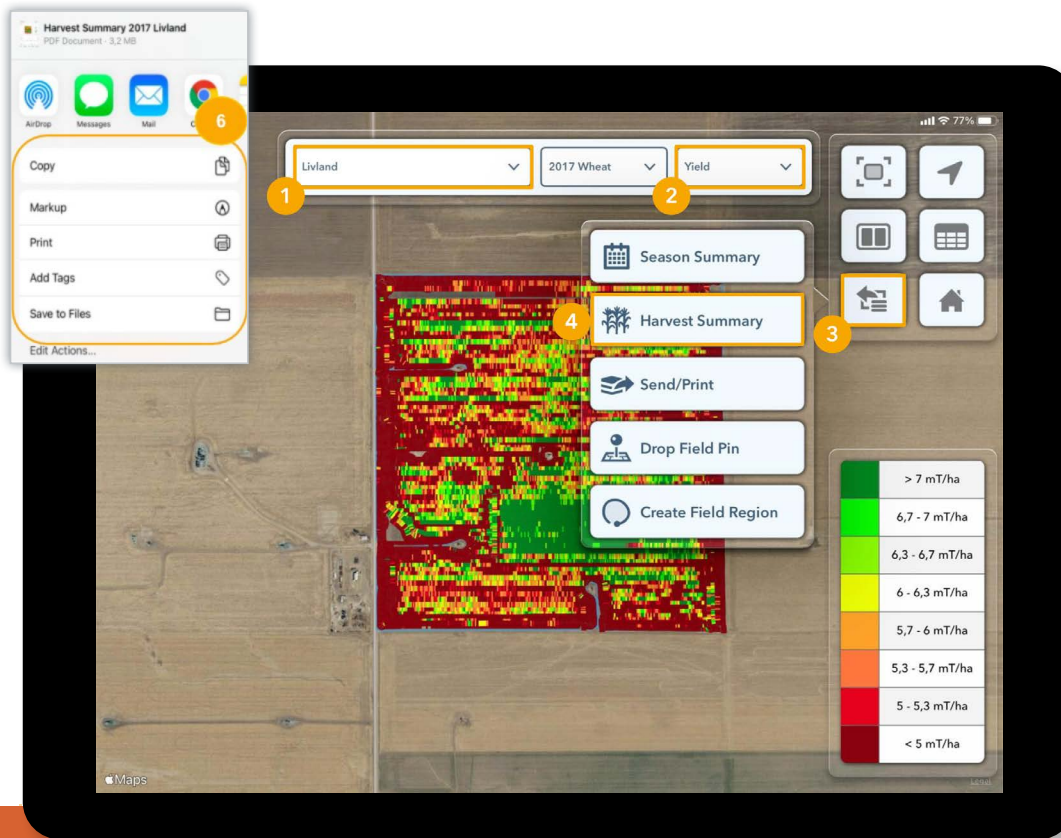


4. Fields/Hybrids

7

Share with others or Print by tapping the Share button





2. 2017 Wheat - Yield
4. Season Summary
5. Create Map PDF
6. Print - Save to files - Message - Mail

3

HARVEST SUMMARY REPORT

1

Select a field

2

Select the yield map

3

Tap the More button

4

Select Harvest Summary

5

Tap Create Map PDF

6

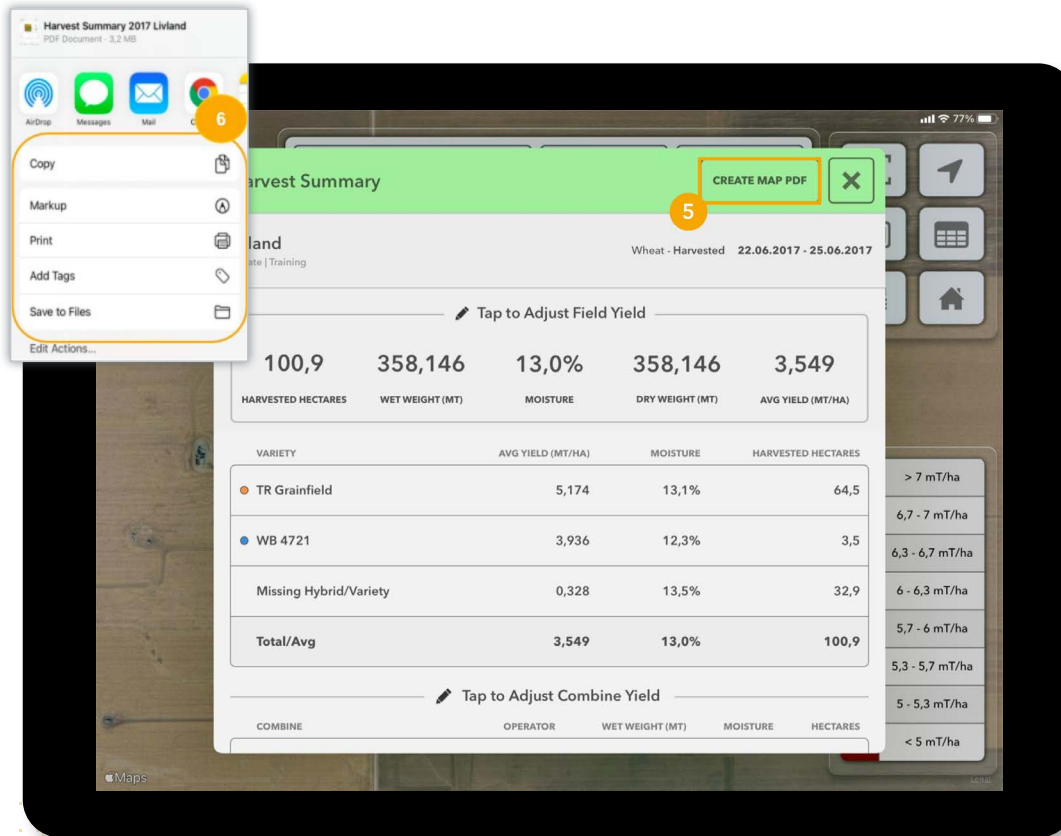
Select Print, Save to Files, Message or Mail

7

Enter contact information or select printer/folder

8

Tap Send



4

SEASON SUMMARY REPORT

1

Select a field

2

Select the yield map

3

Tap the More button

4

Select Season Summary

5

Tap Create PDF

6

Select Print, Save to Files, Message or Mail

7

Enter contact information or select printer/folder

8

Tap Send