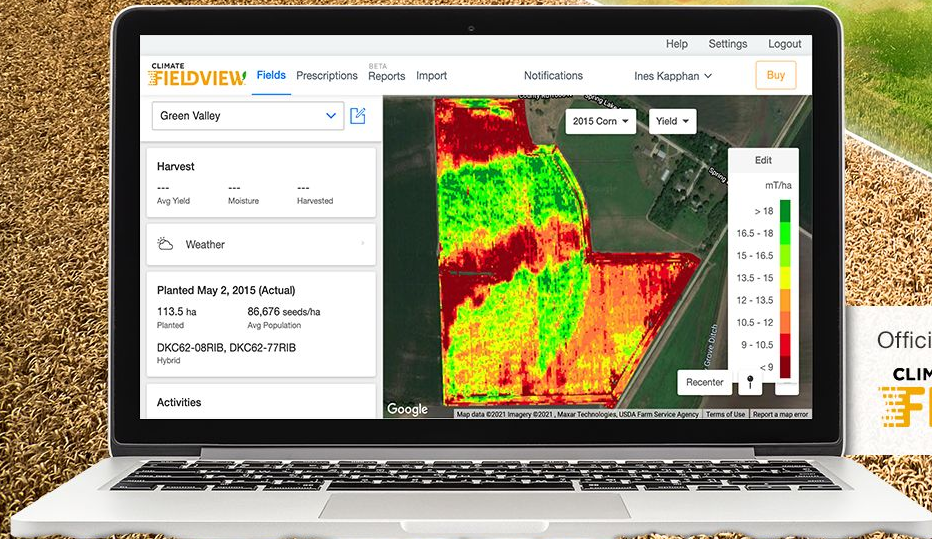


Connecting FieldView to Claas Telematics



Official CLAAS API Partner

CLIMATE
FIELDVIEW



Connecting FieldView to Claas Telematics

Connecting FieldView to Claas takes just a few minutes and can save a lot of time down the line. It also allows you to get full benefit from your yield data before making big decisions for next year.

When logged into FieldView via your web browser follow these easy steps.

1. Go to Settings in the top right corner and select Account
2. Scroll down to Connected Accounts and click connect next to CLAAS Telematics.
3. Enter your Telematics username/password to establish the connection.
4. Once connected, your data will start transferring from Claas Telematics into Climate FieldView and will be available in your Data Inbox within the next 24 hours.

